

Standard Drum Rudiments

www.drumsportal.com

1. Roll Rudiments

A. Single stroke roll rudiments

1. Single Stroke Roll

RLRLRLRLRLRLRLRL

2. Single Stroke Four

R L R L R L R L
L R L R L R L R

3. Single Stroke Seven

R L R L R L R
L R L R L R L

B. Multiple bounce roll rudiments

4. Multiple bounce (buzz) roll

5. Triple Stroke Roll

R R R L L L R R R L L L

C. Double stroke roll rudiments

6. Double Stroke Open Roll

RRLRLL etc
LLRLLRR

7. Five Stroke Roll

R R L L

8. Six Stroke Roll

R L R L
L R L R

9. Seven Stroke Roll

L R L R
R L R L

10. Nine Stroke Roll

R R L L

11. Ten Stroke Roll

R RL R RL
L LR L LR

12. Eleven Stroke Roll

R L R L
L R L R

13. Thirteen Stroke Roll

R R L L

14. Fifteen Stroke Roll

R L R L
L R L R

15. Seventeen Stroke Roll

R R
L L

2. Paradiddle Rudiments

16. Single Paradiddle



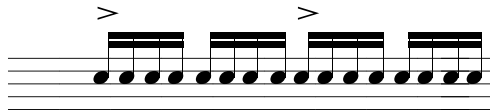
R L R R L R L L

17. Double Paradiddle



R L R L R R L R L L L

18. Triple Paradiddle



R L R L R L R R L R L R L L

19. Single Paradiddle-diddle



R L R R L L
L R L L R R

3. Flam Rudiments

20. Flam



^LR ^RL

21. Flam Accent



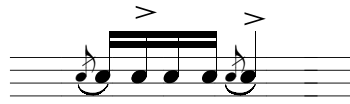
^LR L R ^RL R L

22. Flam Tap



^LR R ^RL L ^LR R ^RL L

23. Flamacue



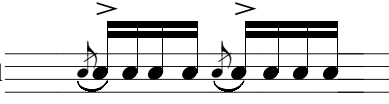
^LR L R L ^LR
^RL R L R ^RL

24. Flam Paradiddle



^LR L R R ^RL R L L

25. Single Flammed Mill



^LR R L R ^RL L R L

26. Flam Paradiddle-diddle



^LR L R R L L ^RL R L L R L

27. PataFlaFla



^LR L R ^RL ^LR L R ^RL

28. Swiss Army Triplet



^LR R L ^LR R L
^RL L R ^RL L R

29. Inverted Flam Tap



^LR L ^RL R ^LR L ^RL R

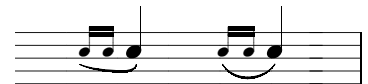
30. Flam Drag



^LR L L R ^RL R R L

4. Drag Rudiments

31. Drag



^{LL}R ^{RR}L

32. Single Drag Tap



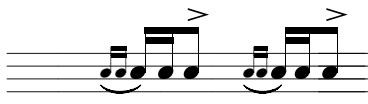
^{RR}R L ^{LL}R L

33. Double Drag Tap



^{LL}R ^{LL}R L ^{RR}L ^{RR}L R

34. Lesson 25



^{LL}R L R ^{LL}R L R
^{RR}L R L ^{RR}L R L

35. Dragadiddle



^{RR}L R L ^{LL}R L L

36. Drag Paradiddle #1



R ^{LL}R L R R L ^{RR}L R L L

37. Drag Paradiddle #2



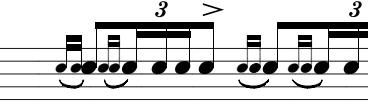
R ^{LL}R ^{LL}R L R R L ^{RR}L ^{RR}L R L L

38. Single Ratamacue



^{LL}R L R L ^{RR}L R L R

39. Double Ratamacue



^{LL}R ^{LL}R L R L ^{RR}L ^{RR}L R L R

40. Triple Ratamacue



^{LL}R ^{LL}R ^{LL}R L R L R L ^{RR}L ^{RR}L ^{RR}L R L R